

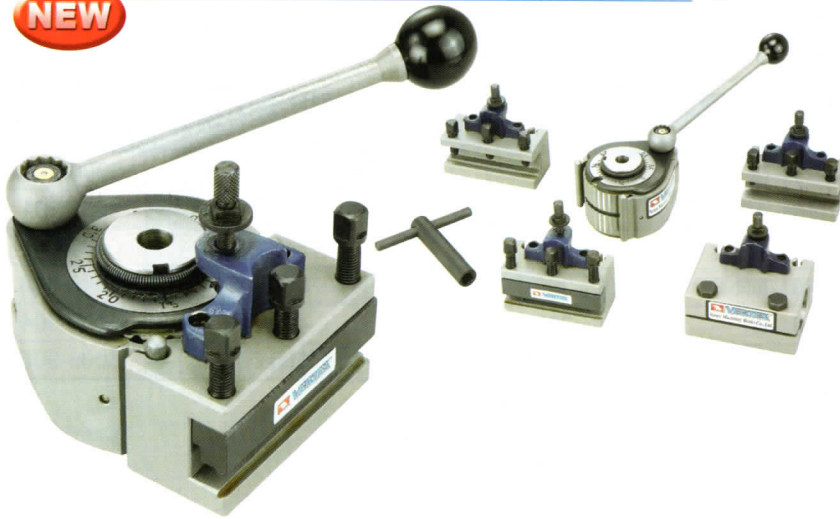


Quick Change Tool Post & Holders-40

Positioning European Style



NEW



European Style

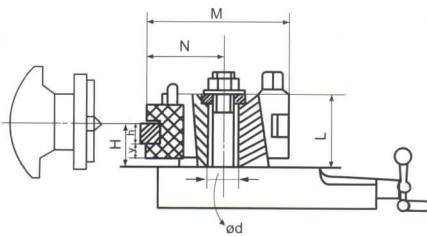
Tool post and tool holders are precisely grounded with 40 tool-bit positions. Easy to operate and can be fitted with many different tool-holders. Locking and loosening of any tool-holders are performed by a simple eccentric clamping. The simplicity and fast tool changing increases the lathe turning production. A height adjustment for tool bits is controlled by a knurled head-screw, without the need for packing plates or shims. This style is interchangeable with Hasse.

Complete set includes:

- 1 Pieces Tool post
- 3 pieces Turning & Facing Holder-"D"
- 1 piece Boring Bar Holder-"B"

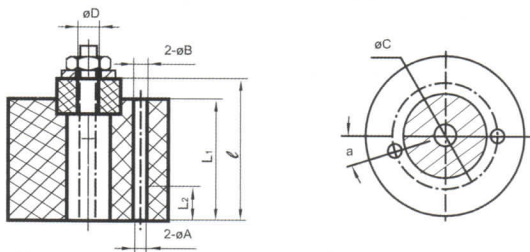
ORDER NO.	5-PIECE SETS EACH SET INCLUDES (5 pcs/set)	G.W. kgs	CODE NO.
VTP-V-A0	1 x tool post F40-0(A0), 2 x F40-010(A0D12x50) and 1 x F40-020(A0B12x50) and 1 x F40-040(A0A2.7x10x50)	1.5	5006-955A
VTP-V-A1	1 x tool post F40-1(A1), 2 x F40-111(A1D16x75) and 1 x F40-140(A1A2.7x10x75) and 1 x F40-121(A1B16x80)	4.0	5006-956A
VTP-V-E5	1 x tool post F40-2(B5), 2 x F40-211(E5D20x100) and 1 x F40-220(E5B30x100) and 1 x F40-240(E5A2.7x10x100)	8.0	5006-957A
VTP-B2	1 x tool post F40-3(B2), 3 x F40-311(B2D25x120) and 1 x F40-320(B2B32x130)	12.3	5006-958
VTP-C3	1 x tool post F40-4(C3), 3 x F40-411(C3D32x150) and 1 x F40-422(C3B40x160)	24.3	5006-959

Set Style For Lathe



ORDER NO.	VTP-F40-0	VTP-F40-1	VTP-F40-2	VTP-F40-3	VTP-F40-4
	D12	D16 D20	D20 D25	D25 D32	D32 D40 D45
Driving Power (kw)	1.2	2	4.5	7	13
Lathe Swing (mm)	120-220	150-300	200-400	300-500	400-700
H min. (mm)	18.5	25.5 29.5	32 37	38 46	47.5 55.5 61
H max. (mm)	26.5	36.5 40.5	49 52	58 57	87.5 91.5 91
y (mm)	6.5	9.5	12	13 14	15.5 15.5 16
h (mm)	12	16 20	20 25	25 32	32 40 45
M (mm)	6.8	104	132	150	192 201 202
L (mm)	37	55	68	76	107
N (mm)	34	52	66	73	93 102 103
ød (mm)	13	20	20	32	40

40 Position Tool Post Body



ORDER NO.	ØD	L2	L1	ℓ	ØA	ØB	ØC	α
VTP-F40-0	6	-	30	37	-	-	-	-
VTP-F40-1	10	12	45	55.3	5.6	6.8	42	18°
VTP-F40-2	10	14	57	67.3	5.6	6.8	49	15°
VTP-F40-3	14	20	65	75	6.9	9	64	30°
VTP-F40-4	24.5	10	95	107	9.5	11	88	18°

40 Position Tool Post



ORDER NO.	Lathe swing (mm)	For Style NO.	Height of cutting edge range (mm)	CODE NO.
VTP-F40-0	120-220	VTP-A0	D12/18.5~26.5	5006-930
VTP-F40-1	150-300	VTP-A1	D16/25.5~36.5 or D20/29.5~40.5	5006-931
VTP-F40-2	200-400	VTP-E5	D20/32~49 or D25/37~52	5006-932
VTP-F40-3	300-500	VTP-B2	D25/38~58 or D32/46~57	5006-933
VTP-F40-4	400-700	VTP-C3	D32/47.5~87.5 or D40/55.5~91.5 or D45/61~91	5006-934